



HOLY LASER



CONTENTS

01

COMPANY PROFILE

02

PRODUCT DESCRIPTION

03

TECHNICAL PARAMETERS

04

APPLICATION



CONTENTS

05

TRADE SHOW

06

SERVICE

07

PACKING & SHIPPING

08

CONTACT US

01

COMPANY PROFILE



Established : June, 2006

Registered capital:10 million Yuan

Number of employees:More than 120 people,80 people with college education

R & D team: 35 people

Service Content:Full set of industrial laser application solutions

We have sold our machine to more than 50 countries all over the world, like, USA, UK, Italy,Germany, Brazil, Russia, South Korea, Mexico, Spain, Canada, Finland, Estonia, India, Indonesia, Egypt, Singapore, Laos, Myanmar, Vietnam, Mongolia, Mexico, Brunei, Thailand, Pakistan, Vietnam, Singapore, Iran, Turkey, Bahrain, France, Denmark, Sweden, Netherlands, Poland, Norway, Pakistan, Kuwait, Saudi Arabia, United Arab Emirates, Romania, Bulgaria, Spain, Portugal, Morocco, Poland, Monaco, Algeria, Malaysia, Japan, etc.

Products: Laser welding, laser cutting, laser marking,3D laser inside engraving, automation, robotics, 3D printers and other series of equipment

Patents and certifications: We have 1 invention patent, 21 utility model patents, 6 appearance patents and 4 computer software copyrights.

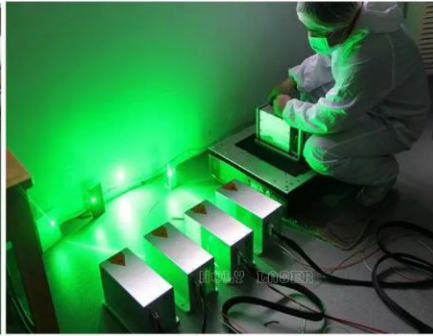
Subsidiaries: Suzhou Branch, Wuhan Branch, Shenzhen Branch

Offices around the country: Set up offices and distributors in many key cities across the country, serving radiation throughout the country.



01

COMPANY PROFILE



01 PRODUCT DESCRIPTION

3D CRYSTAL LASER SUBSURFACE ENGRAVING MACHINE -----HSGP-5KB/4KA/4KB/3KC/3KL/3000



01

PRODUCT DESCRIPTION



Our Laser engraving 3d crystal photo studio printing machine is professional to engrave the 2D or 3D photo, design inside of the crystal cube or glass by laser.

Can be widely used to open a shop in malls or tourism place, even can open a shop on line for 2D, 3D crystal photo engraving , art photo engraving, personalized crystal gift engraving , high precision crystal product mass processing , glass decorating , glass marking , high-grade glass anti-counterfeiting and other areas

Equipment Advantages:

- Using advanced galvanometer technology with 3-5 KHZ diode-pumped
- YAG frequency-doubled laser, the explosion point is very fine and bright, engraving speed is faster, the pattern is more refined, vivid and lifelike;
- The key components are from Germany and the United States. The design is more reasonable and the long-term working stability is good.
- Equipped with self-developed software to create 3D portraits with 3D cameras;
- To meet the needs of personalization and batch rapid processing, a single device can meet multiple store network sales and e-commerce network sales.

01

PRODUCT DESCRIPTION



1



JPG, BMP



make dots



Engrave



2



take photo by 3D camera



get 3D data



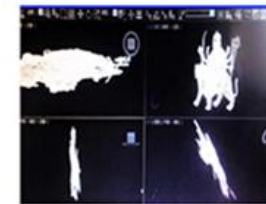
Engrave



3



JPG, BMP



DXF, OBJ



Engrave





TECHNICAL PARAMETERS






Model No.	HSGP-5KB	HSGP-4KA	HSGP-4KB	HSGP-3KC
Max.Working Area	300*400*130MM			
Max.Working Speed	3000,000 dots/min	2400,000 dots/min		1800,000 dots/min
Frequency	5000HZ	4000HZ		3000HZ
Focus Dia./Resolution	0.02mm /800-1200 DPI			
Cooling	Air Cooling			
Laser Source & Software	HOLY LASER			
Power consumed	≤1500W			
Warranty	2 Years			



TECHNICAL PARAMETERS



Laser Source	HOLY LASER	
Laser Module	Germany Dilas	
Q-Switch	U.K. Gooch & Housego	
Switch Power Supply	TAIWAN MEANWELL	
Software	HOLY LASER	
2d-3d software	HOLY LASER / TAIWAN SHAP MG	



TECHNICAL PARAMETERS



Model No.	HSGP-3000		
Support Person No.	1-3 person(take photograph person each time)	Effective Pixels	8,000,000 pixels
Maximum image capture range	600mm(W)*600mm(H)*600mm(D)	Flash	yes
Exposure time	≤ 1 second	Measuring range	400mm(W)*300mm(H)*400mm(D)
3D measurement accuracy	≤ 0.1mm	Data output form Visible	DXF\ASC\GPD\XYZ The output data can be docked directly with the crystal engraving machine, which can scan eyebrows and hair data (parts). When bidding, a crystal inner engraving containing the scanned face data must be taken as the acceptance criteria
Automatic processing time	≤ 1 second		
Object shooting distance	1.1-1.5m	Visible light technology	No harm to the eyes, using high-brightness LED cold light source, non-heating light source life is greater than 100,000 hours. The system is equipped with a filter system to filter out the light in the environment, reduce noise and improve data quality.
3D measurement angle	One-way 180° real imaging		

Advantages



- **High Speed Scan Ability**
- **Well-known Parts Support Trustworthy Quality**
- **Over 12 Years Research Experience**
- **Improved After-sales Service 24 hours online Timely Response**
- **Self-Developed Softwares & Laser Source**
- **2 Years Warranty**

04

APPLICATION



Crystals, Glasses, Acrylics, Polycarbonates or Methacrylates, etc.

Can be widely used to open a shop in malls or tourism place, even can open a shop online for 2D, 3D crystal photo engraving, art photo engraving, personalized crystal gift engraving, high precision crystal product mass processing, glass decorating, glass marking, high-grade glass anti-coun-





05

TRADE SHOW



06

SERVICE



If we start our business relationship, we will sign the contract in accordance with the final negotiation results and strictly perform the contractual obligations.

We provide 2 Years warranty (except for wearing parts), we will respond in 24 Working hours for after-sales problems. If the problem cannot be solved remotely, after our technician confirms that it is necessary to send the damaged parts for repair or replacement, we will update maintenance progress within 48 hours after receiving the parts !

We will provide lifetime technical maintenance and software service upgrades !

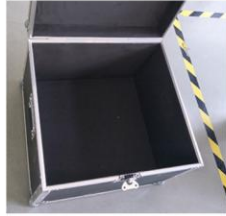
07 PACKING & SHIPPING



1



2



3



4

PACKING:

- Waterproof membrane packing inside
- Professional Export Standard Fumigation-Free Plywooden Case



1



2



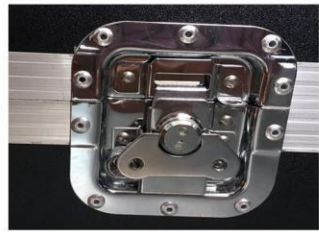
3

SHIPPING:

- Air shipping
- Sea shipping
- Land transportation (Mainly for Moscow, etc Customers)



4



Strategic Partners





CONTACT US



ZHEJIANG HOLY LASER TECHNOLOGY CO., LTD.
Add: Bld No.1, Area B, No.E21 Xinke Road, YiWu Economic
Development Zone, ZheJiang
Wechat & Mobile: 0086-152-6864-2858
Email: sales04@holylaser.com
Web: www.holylaser3d.com

The image features a central white circle with a thin dark green border. Inside the circle, the text "Thank you !" is written in a light orange, sans-serif font. The background is a light purple gradient, overlaid with a large, colorful paint splatter. The splatter consists of various colors including blue, green, yellow, orange, red, and purple, with some colors appearing as fine droplets and others as larger, more saturated patches. The overall effect is bright and celebratory.

Thank you !